



#### Gouvia marina - Information

Dear valued customer , thank you for your choice to our boats and services .

Inside this document , we have prepared a map with the Gouvia marina position in relation to the island and its layout where our boats located .

The marina from the airport is only 15-20 min and we can arrange you a taxi to reach our base at an extra charge.

With our sincere regards ,

On behalf of

The SAILORSBREEZE Team ,

Potis Theofilakos

### **By air**

The quickest way of reaching Corfu is by air. These days a number of domestic flights from Athens and Thessalonica take place on a daily basis all year round, with Olympic Airways and Aegean Airlines. The duration of the flight from either city is about 40 minutes.

International flights are scheduled throughout the year while during the summer period (April - October), there are many charter flights connecting Corfu directly with several European cities.

### **Useful links**

<https://el.aegeanair.com/>  
<https://www.olympicair.com/>  
<https://www.skyexpress.gr/en>

### **By ship**

When it comes to getting here by sea, there are a number of alternatives. There are daily ferryboats connecting Corfu with Igoumenitsa, with timetables which change according to season.

Large ferries depart from Patras to Italy (Bari, Brindisi, Ancona, Venice) and vice versa, usually with a stop at Corfu.

### **Useful Links**

[www.greekferries.gr](http://www.greekferries.gr)

### **By car**

Driving from abroad to Corfu by car one reaches the Italian ports, from where it is necessary to continue by ferry.

From Athens, the distance is approximately 550 km - 5 hours drive to Igoumenitsa, from where one takes the ferry to Corfu.



Instructions how to get to our base in Gouvía marina

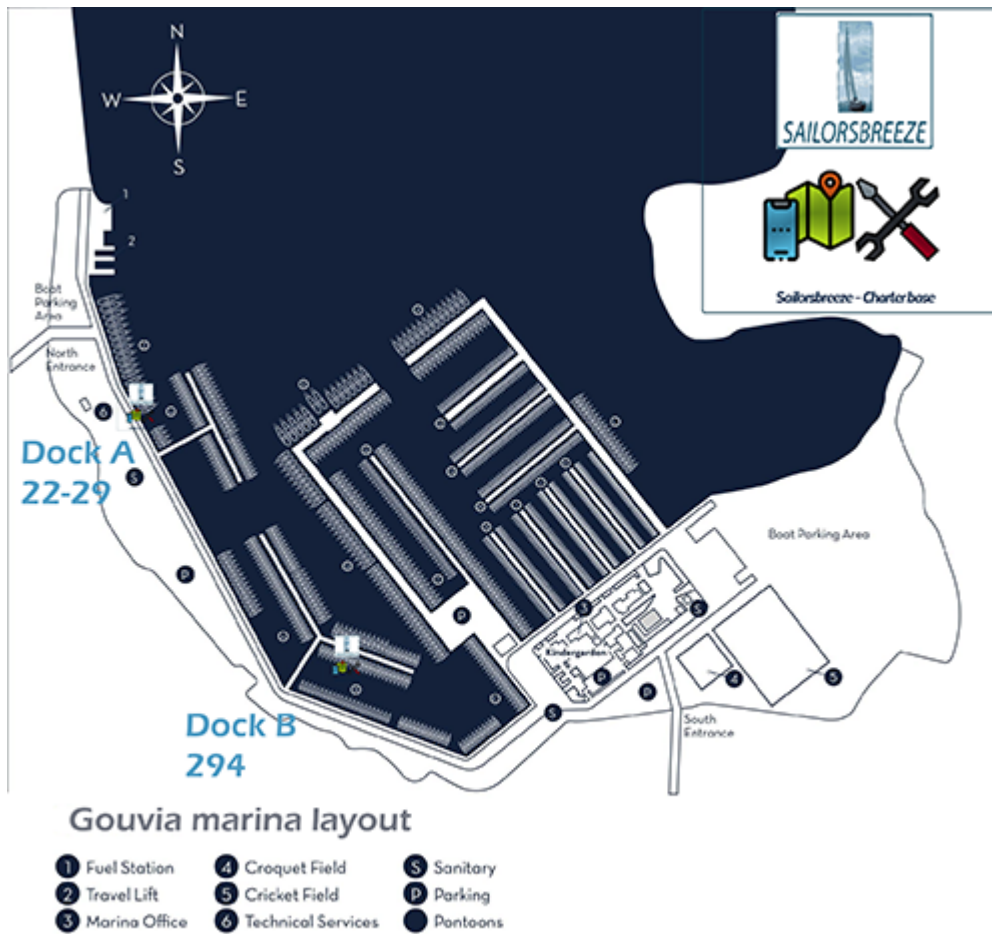
## Sailorsbreeze Base Map

Map : N 39° 39'.1 E 19° 51'

Our Yachts position in the marina : Dock A , positions 22 – 29 & at Dock B, floating pontoon 293.  
For any other yachts we will notify you the exact berth .

PRIMARY BERTHS		
Yacht type	Yacht name	
SUN ODYSSEY 479	"AMFITRITI"	A 22-29
SUN ODYSSEY 449	"ARIADNE"	A 22-29
OCEANIS 45	"ALFA"	A 22-29
BAVARIA 46 CRUISER	"PAXOS"	A 22-29
OCEANIS 41	"ASJEMENOU"	B 294 opposite of dock B (floating pontoon on the right)

Gouvía marina base map



## CONTACT INFORMATION OF OUR STAFF

### Base managers

Contact name	Contact Phone
Potis Theofilakos	Corfu Landline : 0030 2661 0 58981
	Mobile phone : 0030 698 7418374

## IMPORTANT INFORMATION

**1. Our office working hours are****a. Weekdays**

- i. **(Mon to Thu)**, 11.00 am - 05.00 pm.
- ii. **(Friday)** 11.00 am -07.00 pm

**b. Weekend**

- i. **Saturday** 09.00 am - 05.30 pm
- ii. **Sunday** 11.00 am – 2.00 pm

c. Please contact us between these working hours.

**2. Arrival at the base**

- a. If you arrive at the base later than 5 PM we reserve the right to do the check in and the paperwork , next morning .
- b. If you arrive before 5 PM but we still don't have any information about it, or a crew list or any other information about their arrival , then we do the check-in according to our priority list and we reserve the right to deliver the documents of the boat , next morning .
- c. All boats can be ready for the check-in after , earliest possible after 3 PM .
- d. For early check – in between 1 PM and 2 PM , there is an extra charge , and is always upon request and availability .

**3. Positions of our yachts****a. Primary berths :**

- **A pier**, positions 22-29.

In the layout you can see the exact position with the spot A.

**b. Secondary berths**

- **B (floating pontoon) No 293**

In the layout you can see the exact position with spot B.

**4. All extra charges** -if not pre-paid- are payable in cash or by a credit card upon the embarkation of the boat.

If prepaid –included in the charter payments- you need to present to us the voucher .

**5. Check in** : 17.00 hrs , **Check out** : 09.00 hrs (return of the yacht no later than 17:00 the evening before the end of the charter, refuel the yacht , overnight accommodation on board till 09:00 next day)**6. Refundable Security**

Please be aware that we accept credit cards for the Refundable Security Deposit preferably not debit cards . (Visa, MasterCard accepted, AMEX) .

The insurance of the Refundable Security Deposit can be arranged through our , insurance business partner , Pantaenius .

The Sailorsbreeze.com Team

Anchors Away!